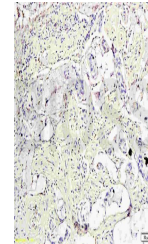


Product Datasheet

ATG1 (phospho-Ser556) antibody (orb5735)

Description	ATG1 (phospho-Ser556) antibody
Species/Host	Rabbit
Reactivity	Human, Mouse, Rat
Conjugation	Unconjugated
Tested Applications	FC, ICC, IHC-P
Immunogen	KLH conjugated Synthesised phosphopeptide derived from human ATG1/ULK1 around the phosphorylation site of Ser556 (LH(p-S)AP)
Target	Phospho-ATG1 (Ser556)
Preservatives	0.01M TBS(pH7.4) with 1% rAlbumin, 0.03% Proclin300 and 50% Glycerol.
Form/Appearance	Liquid
Concentration	1mg/ml
Storage	Shipped at 4°C. Store at -20 °C for one year. Avoid repeated freeze/thaw cycles.
Note	For research use only
Isotype	IgG
Clonality	Polyclonal
MW	116 kDa
Uniprot ID	075385
Dilution Range	IHC-P=1:100-500, ICC=1:100, Flow-Cyt=3ug/test, WB=1:500-2000, IHC-F=1:100-500, IF=1:100-500, ELISA=1:5000-10000
Expiration Date	12 months from date of receipt.



IHC-P of human rectum tissue using ATG1 ...