
Product Datasheet

Topoisomerase II alpha/TOP2A Antibody (orb570416)

Description

Topoisomerase II alpha/TOP2A Antibody

Species/Host

Rabbit

Reactivity

Human

Conjugation

Unconjugated

Tested Applications

FC, ICC, IF, IHC, WB

Immunogen

A synthetic peptide corresponding to a sequence of human Topoisomerase II alpha/TOP2A (EDYLYGQTTTYLTYND).

Form/Appearance

Lyophilized

Concentration

Adding 0.2 ml of distilled water will yield a concentration of 500 µg/ml.

Storage

Store at -20°C for one year from date of receipt. After reconstitution, at 4°C for one month. It can also be aliquotted and stored frozen at -20°C for six months. Avoid repeated freeze-thaw cycles.

Note

For research use only

Application notes

Tested Species: In-house tested species with positive results. By Heat: Boiling the paraffin sections in 10mM citrate buffer, pH6.0, for 20mins is required for the staining of formalin/paraffin sections. Other applications have not been tested. Optimal dilutions should be determined by end users. Add 0.2ml of distilled water will yield a concentration of 500ug/ml.

Isotype

Rabbit IgG

Clonality

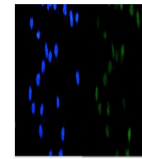
Polyclonal

MW

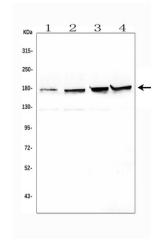
174 kDa

Uniprot ID
[P11388](#)
Expiration Date

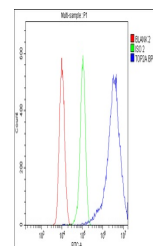
12 months from date of receipt.



IF analysis of TOP2A using anti-TOP2A an...



WB analysis using anti-TOP2A antibody.La...



Flow Cytometry analysis of 293T cells US...