
Product Datasheet

MTR Antibody (orb570398)

Description

MTR Antibody

Species/Host

Rabbit

Reactivity

Human, Mouse, Rat

Conjugation

Unconjugated

Tested

ELISA, FC, IHC, WB

Applications
Immunogen

E.coli-derived human MTR recombinant protein (Position: V880-D1095).

Form/Appearance

Lyophilized

Concentration

Adding 0.2 ml of distilled water will yield a concentration of 500 µg/ml.

Storage

Store at -20°C for one year from date of receipt. After reconstitution, at 4°C for one month. It can also be aliquotted and stored frozen at -20°C for six months. Avoid repeated freeze-thaw cycles.

Note

For research use only

Application notes

Tested Species: In-house tested species with positive results. By Heat: Boiling the paraffin sections in 10mM citrate buffer, pH6.0, for 20mins is required for the staining of formalin/paraffin sections. Other applications have not been tested. Optimal dilutions should be determined by end users. Add 0.2ml of distilled water will yield a concentration of 500ug/ml.

Isotype

Rabbit IgG

Clonality

Polyclonal

MW

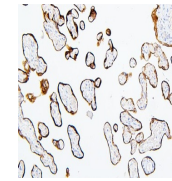
140 kDa

Uniprot ID
Q99707
Dilution Range

Western blot, 0.25-0.5µg/ml, Human Immunohistochemistry (Paraffin-embedded Section), 0.5-1µg/ml, Human, Mouse, Rat, By Heat Direct ELISA, 0.1-0.5µg/ml, Human

Expiration Date

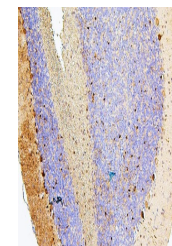
12 months from date of receipt.



IHC analysis of MTR using anti-MTR antib...



IHC analysis of MTR using anti-MTR antib...



IHC analysis of MTR using anti-MTR antib...