
Product Datasheet

EDF1 antibody (orb570253)

Description

Goat polyclonal antibody to EDF1

Species/Host

Goat

Reactivity

Human, Mouse, Rat

Conjugation

Unconjugated

Tested Applications

ELISA, FC, IF, IHC, WB

Target

EDF1 / MBF1

Preservatives

Supplied at 0.5 mg/ml in Tris saline, 0.02% sodium azide, pH 7.3 with 0.5% bovine serum albumin. Aliquot and store at -20°C. Minimize freezing and thawing.

Storage

Aliquot and store at -20°C. Minimize freezing and thawing.

Note

For research use only

Application notes

WB: Approx 19kDa band observed in nuclear lysates of cell line HEK293, approx. 18kDa in nuclear lysates of cell line HeLa, and approx 17kDa in nuclear lysates of cell line NIH3T3 (calculated MW of 16.4kDa according to Human NP_003783.1 and Mouse NP_067494.1).. IHC: Paraffin embedded Human Pancreas and Brain (Cortex). Recommended concentration: 3.75µg/ml.. Notes: Immunofluorescence: Strong expression of the protein seen in the nuclei of A431 and HeLa cells. Recommended concentration: 10µg/ml. Flow Cytometry: Flow cytometric analysis of A431 cells. Recommended concentration: 10u

Protein Sequence

AESDWDTVTVLRK

Clonality

Polyclonal

MW

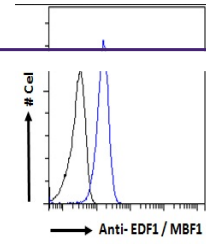
16.4; 15.5; 15.6; 14.1; 14.4

Entrez
8721
Dilution Range

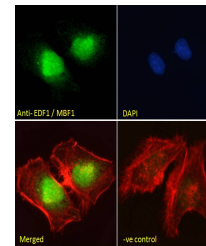
ELISA: 1:32000, WB: 0.3-1 µg/ml, IHC-P: 3.75 µg/ml

Expiration Date

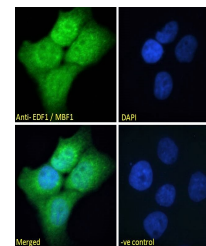
12 months from date of receipt.



Flow cytometric analysis of A431 cells u...



Immunofluorescence analysis of HeLa cell...



Immunofluorescence analysis of A431 cell...