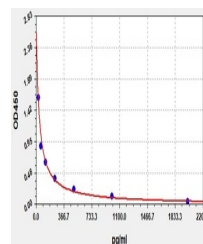


## Product Datasheet

### Sheep PGE2 ELISA Kit (orb568105)

<b>Description</b>	Sheep PGE2 ELISA Kit
<b>Reactivity</b>	Sheep
<b>Range</b>	31.25-2000pg/ml
<b>Target</b>	PGE2
<b>Storage</b>	2-8 °C for 6 months
<b>Note</b>	For research use only
<b>Application notes</b>	Competitive ELISA, Coated with Antigen
<b>Sample Types</b>	Serum, Plasma, Cell Culture Supernatant, Cell or tissue lysate, Other liquid samples
<b>Sensitivity</b>	18.75pg/ml
<b>Expiration Date</b>	Please enquire.



Sheep  
PGE2(Prostaglandin  
E2) ELISA Kit