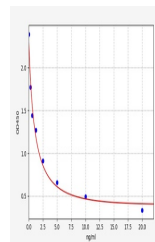


## Product Datasheet

### Rabbit PRL ELISA Kit (orb568006)

<b>Description</b>	Rabbit PRL ELISA Kit
<b>Reactivity</b>	Rabbit
<b>Range</b>	0.313-20ng/ml
<b>Target</b>	PRL
<b>Storage</b>	2-8 °C for 6 months
<b>Note</b>	For research use only
<b>Sample Types</b>	Serum, Plasma, Cell Culture Supernatant, Cell or tissue lysate, Other liquid samples
<b>Uniprot ID</b>	<a href="#">Q28632</a>
<b>Sensitivity</b>	0.188ng/ml
<b>Expiration Date</b>	Please enquire.



Rabbit  
PRL(Prolactin)  
ELISA Kit