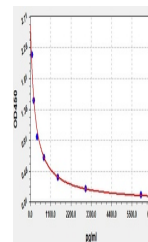


Product Datasheet

Rat alpha-CTx ELISA Kit (orb567737)

Description	Rat alpha-CTx(Alpha Crosslaps) ELISA Kit
Reactivity	Rat
Range	93.75-6000pg/ml
Target	α -CTx
Storage	2-8 °C for 6 months
Note	For research use only
Application notes	Competitive ELISA, Coated with Antigen
Sample Types	Serum, Plasma, Cell Culture Supernatant, Cell or tissue lysate, Other liquid samples
Sensitivity	56.25pg/ml
Expiration Date	Please enquire.



Rat α -
CTx(Alpha
Crosslaps)
ELISA Kit