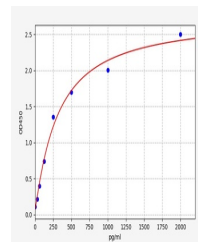


## Product Datasheet

### Rat MAPtau ELISA Kit (orb567523)

<b>Description</b>	Rat MAPtau(Microtubule Associated Protein Tau) ELISA Kit
<b>Reactivity</b>	Rat
<b>Range</b>	31.25-2000pg/ml
<b>Target</b>	MAPT
<b>Storage</b>	2-8 °C for 6 months
<b>Note</b>	For research use only
<b>Sample Types</b>	Serum, Plasma, Cell Culture Supernatant, Cell or tissue lysate, cerebrospinal fluid [CSF], Other liquid samples
<b>Uniprot ID</b>	<b>P19332</b>
<b>Sensitivity</b>	18.75pg/ml
<b>Expiration Date</b>	Please enquire.



Rat  
MAPτ(Microtubule  
Associated  
Protein...