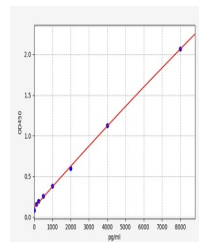


Product Datasheet

Rat LTF ELISA Kit (orb567520)

| | |
|------------------------|--|
| Description | Rat LTF ELISA Kit |
| Reactivity | Rat |
| Range | 125-8000pg/ml |
| Target | LTF/LF |
| Storage | 2-8 °C for 6 months |
| Note | For research use only |
| Sample Types | Serum, Plasma, Cell Culture Supernatant, Cell or tissue lysate, Other liquid samples |
| Uniprot ID | D3ZAB1 |
| Sensitivity | 75pg/ml |
| Expiration Date | Please enquire. |



Rat
LTF/LF(Lactoferrin)
ELISA Kit