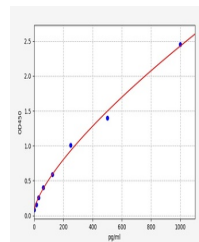


Product Datasheet

Rat CT1 ELISA Kit (orb567310)

Description	Rat CT1 ELISA Kit
Reactivity	Rat
Range	15.625-1000pg/ml
Target	CT1
Storage	2-8 °C for 6 months
Note	For research use only
Sample Types	Serum, Plasma, Cell Culture Supernatant, Cell or tissue lysate, Other liquid samples
Uniprot ID	P28570
Sensitivity	9.375pg/ml
Expiration Date	Please enquire.



Rat
CT1(Cardiotrophin
1) ELISA Kit