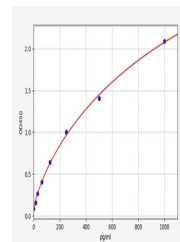


Product Datasheet

Rat CGRP ELISA Kit (orb567281)

| | |
|------------------------|--|
| Description | Rat CGRP ELISA Kit |
| Reactivity | Rat |
| Range | 15.625-1000pg/ml |
| Target | CGRP |
| Storage | 2-8 °C for 6 months |
| Note | For research use only |
| Sample Types | Serum, Plasma, Cell Culture Supernatant, Cell or tissue lysate, Other liquid samples |
| Sensitivity | 9.375pg/ml |
| Expiration Date | Please enquire. |



Rat
CGRP(Calcitonin
Gene Related
Peptide...