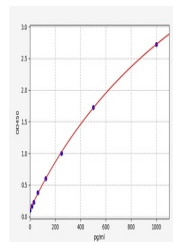


Product Datasheet

Rat Serotonin Transporter ELISA Kit (orb567136)

Description	Rat Serotonin Transporter ELISA Kit
Reactivity	Rat
Range	15.625-1000pg/ml
Target	Slc6a4
Storage	2-8 °C for 6 months
Note	For research use only
Sample Types	Serum, Plasma, Cell Culture Supernatant, Cell or tissue lysate, Other liquid samples
Uniprot ID	P31652
Sensitivity	9.375pg/ml
Expiration Date	Please enquire.



Rat
Slc6a4(Sodium-
dependent
serotonin tr...