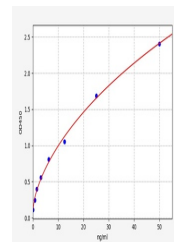


Product Datasheet

Rat Slc6a3 ELISA Kit (orb567055)

Description	Rat Slc6a3 ELISA Kit
Reactivity	Rat
Range	0.78-50ng/ml
Target	Slc6a3
Storage	2-8 °C for 6 months
Note	For research use only
Sample Types	Serum, Plasma, Cell Culture Supernatant, Cell or tissue lysate, Other liquid samples
Uniprot ID	P23977
Sensitivity	0.469ng/ml
Expiration Date	Please enquire.



Rat
Slc6a3(Sodium-
dependent
dopamine tra...