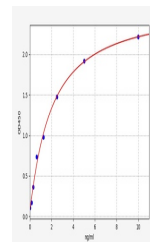


Product Datasheet

Rat InsI3 ELISA Kit (orb566797)

Description	Rat InsI3 ELISA Kit
Reactivity	Rat
Range	0.156-10ng/ml
Target	InsI3
Storage	2-8 °C for 6 months
Note	For research use only
Sample Types	Serum, Plasma, Cell Culture Supernatant, Cell or tissue lysate, Other liquid samples
Uniprot ID	Q9WUK0
Sensitivity	0.094ng/ml
Expiration Date	Please enquire.



Rat
InsI3(Insulin-
like 3) ELISA
Kit