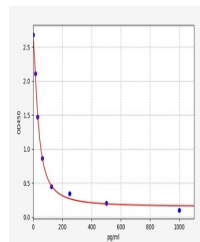


Product Datasheet

Porcine CCK ELISA Kit (orb566633)

Description	Porcine CCK ELISA Kit
Reactivity	Porcine
Range	15.625-1000pg/ml
Target	CCK
Storage	2-8 °C for 6 months
Note	For research use only
Application notes	Competitive ELISA, Coated with Antigen
Sample Types	Serum, Plasma, Cell Culture Supernatant, Cell or tissue lysate, Other liquid samples
Sensitivity	9.375pg/ml
Expiration Date	Please enquire.



Porcine
CCK(Cholecystokinin)
ELISA Kit