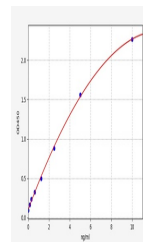


Product Datasheet

Porcine SELE ELISA Kit (orb566575)

Description	Porcine SELE ELISA Kit
Reactivity	Porcine
Range	0.156-10ng/ml
Target	SELE
Storage	2-8 °C for 6 months
Note	For research use only
Sample Types	Serum, Plasma, Cell Culture Supernatant, Cell or tissue lysate, Other liquid samples
Uniprot ID	P98110
Sensitivity	0.094ng/ml
Expiration Date	Please enquire.



Porcine
SELE(E-
Selectin)
ELISA Kit