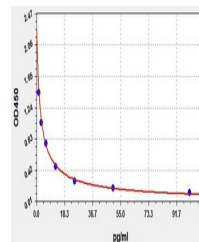


Product Datasheet

Porcine CRH ELISA Kit (orb566483)

Description	Porcine CRH ELISA Kit
Reactivity	Porcine
Range	1.563-100pg/ml
Target	CRH
Storage	2-8 °C for 6 months
Note	For research use only
Application notes	Sandwich ELISA, Double Antibody
Sample Types	Serum, Plasma, Cell Culture Supernatant, Cell or tissue lysate, Other liquid samples
Uniprot ID	P06296
Sensitivity	0.938pg/ml
Expiration Date	Please enquire.



Porcine
CRH(Corticotropin
Releasing Horm...