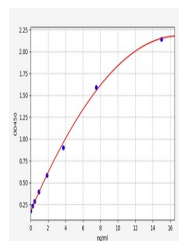


Product Datasheet

Porcine Complement Component 3 ELISA Kit (orb566477)

Description	Porcine Complement Component 3 ELISA Kit
Reactivity	Porcine
Range	0.234-15ng/ml
Target	C3
Storage	2-8 °C for 6 months
Note	For research use only
Sample Types	Serum, Plasma, Cell Culture Supernatant, Cell or tissue lysate, Other liquid samples
Uniprot ID	P01025
Sensitivity	0.141ng/ml
Expiration Date	Please enquire.



Porcine
C3(Complement
Component 3)
ELISA...