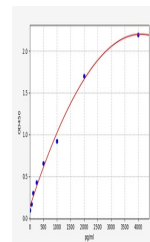


Product Datasheet

Monkey MCP-1 ELISA Kit (orb566401)

Description	Monkey MCP-1 ELISA Kit
Reactivity	Monkey
Range	62.5-4000pg/ml
Target	MCP-1
Storage	2-8 °C for 6 months
Note	For research use only
Sample Types	Serum, Plasma, Cell Culture Supernatant, Cell or tissue lysate, Other liquid samples
Uniprot ID	P61274
Sensitivity	37.5pg/ml
Expiration Date	Please enquire.



Monkey
MCP-
1(Monocyte
Chemotactic
Protei...