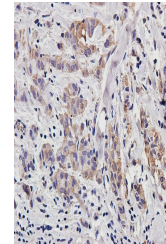


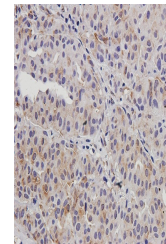
Product Datasheet

Tap1 antibody (orb5653)

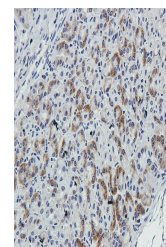
Description	Tap1 antibody
Species/Host	Rabbit
Reactivity	Human
Conjugation	Unconjugated
Tested Applications	FC
Immunogen	KLH conjugated synthetic peptide derived from human Tap1/ABCB2 (501-600/808 aa)
Target	Tap1
Preservatives	0.01M TBS(pH7.4) with 1% rAlbumin, 0.03% Proclin300 and 50% Glycerol.
Form/Appearance	Liquid
Concentration	1mg/ml
Storage	Shipped at 4°C. Store at -20 °C for one year. Avoid repeated freeze/thaw cycles.
Note	For research use only
Isotype	IgG
Clonality	Polyclonal
MW	87 kDa
Uniprot ID	Q03518
Dilution Range	Flow-Cyt=1µg /Test, WB=1:500-2000, IHC-P=1:100-500, IHC-F=1:100-500, IF=1:100-500, ELISA=1:1000-5000
Expiration Date	12 months from date of receipt.



IHC-P staining of human breast cancer ti...



IHC-P staining of human breast cancer ti...



IHC-P image of mouse stomach tissue usin...