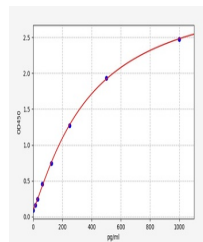


Product Datasheet

Mouse CCL22 ELISA Kit (orb565139)

| | |
|------------------------|-----------------------|
| Description | Mouse CCL22 ELISA Kit |
| Reactivity | Mouse |
| Range | 15.625-1000pg/ml |
| Target | MDC/CCL22 |
| Storage | 2-8 °C for 6 months |
| Note | For research use only |
| Uniprot ID | O88430 |
| Sensitivity | 9.375pg/ml |
| Expiration Date | Please enquire. |



Mouse
MDC/CCL22(Macrophage-
Derived Chemo...