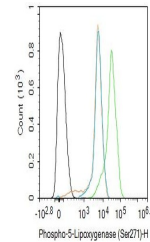


Product Datasheet

5-Lipoxygenase (phospho-Ser271) antibody (orb5647)

Description	5-Lipoxygenase (phospho-Ser271) antibody
Species/Host	Rabbit
Reactivity	Human, Rat
Conjugation	Unconjugated
Tested Applications	FC, IHC-P
Immunogen	KLH conjugated synthesised phosphopeptide derived from rat 5-Lipoxygenase around the phosphorylation site of Ser271 (QL(p-S)LE)
Target	Phospho-ALOX5 (Ser271)
Preservatives	0.01M TBS(pH7.4) with 1% rAlbumin, 0.03% Proclin300 and 50% Glycerol.
Form/Appearance	Liquid
Concentration	1mg/ml
Storage	Maintain refrigerated at 2-8°C for up to 2 weeks. For long term storage store at -20°C in small aliquots to prevent freeze-thaw cycles.
Note	For research use only
Isotype	IgG
Clonality	Polyclonal
MW	78 kDa
Uniprot ID	P09917
Dilution Range	IHC-P=1:100-500, Flow-Cyt=1ug/Test, IHC-F=1:100-500, IF=1:100-500, ELISA=1:5000-10000
Expiration Date	12 months from date of receipt.



Flow cytometry of A431 (black line). Prima...