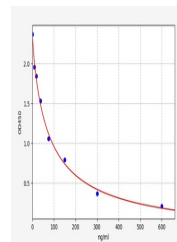


Product Datasheet

Human LZMc ELISA Kit (orb564651)

Description	Human LZMc ELISA Kit
Reactivity	Human
Range	9.375-600ng/ml
Target	LZMc
Storage	2-8 °C for 6 months
Note	For research use only
Application notes	Competitive ELISA, Coated with Antibody
Sample Types	Serum,Plasma,Cell Culture Supernatant,Cell or tissue lysate,Other liquid samples
Uniprot ID	P61626
Sensitivity	5.625ng/ml
Expiration Date	Please enquire.



Human
LZMc(Lysozyme
C) ELISA Kit