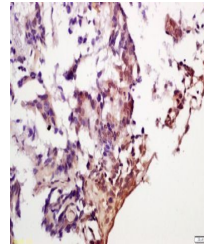


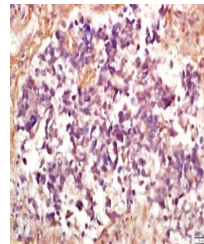
Product Datasheet

4EBP1 (phospho-Ser65/Thr70) antibody (orb5646)

Description	4EBP1 (phospho-Ser65/Thr70) antibody
Species/Host	Rabbit
Conjugation	Unconjugated
Tested Applications	ELISA, IF, IHC-Fr, IHC-P, WB
Immunogen	KLH conjugated Synthesised phosphopeptide derived from mouse 4EBP1 around the phosphorylation site of Ser65/Thr70 (RN(p-S)PVTK(p-T)PP)
Target	phospho-eIF4EBP1 (Ser65 + Thr70)
Preservatives	0.01M TBS(pH7.4) with 1% rAlbumin, 0.03% Proclin300 and 50% Glycerol.
Form/Appearance	Liquid
Concentration	1mg/ml
Storage	Shipped at 4°C. Store at -20 °C for one year. Avoid repeated freeze/thaw cycles.
Note	For research use only
Isotype	IgG
Clonality	Polyclonal
MW	13 kDa
Uniprot ID	Q13541
Expiration Date	12 months from date of receipt.



Immunohistochemical staining of human gallbladder



Immunohistochemical staining of human lung