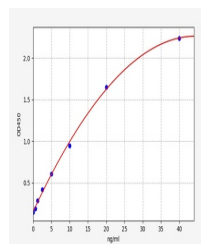


Product Datasheet

Human SEPCR ELISA Kit (orb564519)

Description	Human SEPCR ELISA Kit
Reactivity	Human
Range	0.625-40ng/ml
Target	SEPCR/PROCR
Storage	2-8 °C for 6 months
Note	For research use only
Uniprot ID	Q9UNN8
Sensitivity	0.375ng/ml
Expiration Date	Please enquire.



Human
SEPCR/PROCR(Soluble
Endothelial Pr...