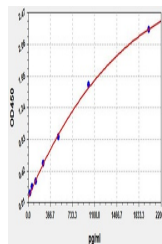


## Product Datasheet

### Human CPP ELISA Kit (orb564071)

<b>Description</b>	Human CPP ELISA Kit
<b>Reactivity</b>	Human
<b>Range</b>	31.25-2000pg/ml
<b>Target</b>	CPP
<b>Storage</b>	2-8 °C for 6 months
<b>Note</b>	For research use only
<b>Uniprot ID</b>	<b>P01185</b>
<b>Sensitivity</b>	18.75pg/ml
<b>Expiration Date</b>	Please enquire.



Human  
CPP(Copeptin)  
ELISA Kit