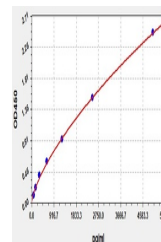


Product Datasheet

Human CGalpha ELISA Kit (orb564033)

Description	Human CGalpha(Chorionic Gonadotropin Alpha Polypeptide) ELISA Kit
Reactivity	Human
Range	78.125-5000pg/ml
Target	CG α
Storage	2-8 °C for 6 months
Note	For research use only
Uniprot ID	P01215
Sensitivity	46.875pg/ml
Expiration Date	Please enquire.



Human
CG α (Chorionic
Gonadotropin
Alpha ...