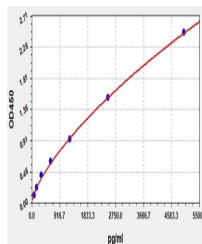


Product Datasheet

Human CCL3L1 ELISA Kit (orb564017)

Description	Human CCL3L1 ELISA Kit
Reactivity	Human
Range	78.125-5000pg/ml
Target	CCL3L1
Storage	2-8 °C for 6 months
Note	For research use only
Uniprot ID	P16619
Sensitivity	46.875pg/ml
Expiration Date	Please enquire.



Human
CCL3L1(Chemokine
C-C-Motif Ligand ...