

---

## Product Datasheet

### MUC16 Antibody / CA125 (orb56398)

**Description**

The mucins are a family of highly glycosylated, secreted


**Species/Host**

Mouse

**Reactivity**

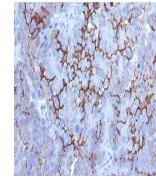
Human

**Conjugation**

Unconjugated

**Tested Applications**

IHC-P



IHC testing of FFPE human ovarian carcin...

**Immunogen**

An enzymatically glycosylated fragment of human MUC16 recombinant protein was used as the immunogen for the MUC16 antibody.

**Preservatives**

0.2 mg/ml in 1X PBS with 0.1 mg/ml rAlbumin (US sourced) and 0.05% sodium azide

**Storage**

Store the MUC16 antibody at 2-8°C (with azide) or aliquot and store at -20°C or colder (without azide).

**Note**

For research use only

**Application notes**

Optimal dilution of the MUC16 antibody should be determined by the researcher.1. The prediluted format is supplied in a dropper bottle and is optimized for use in IHC. After epitope retrieval step (if required), drip mAb solution onto the tissue section and incubate at RT for 30 min.

**Formula**

0.2 mg/ml in 1X PBS with 0.1 mg/ml BSA (US sourced) and 0.05% sodium azide

**Isotype**

Mouse IgG1, kappa

**Clonality**

Monoclonal

**Purity**

Protein G affinity chromatography

**Uniprot ID**

[Q8WXI7](#)

**Hazard Information**

This MUC16 antibody is available for research use only.

**Dilution Range**

Immunohistochemistry (FFPE): 1-2ug/ml for 30 min at RT

**Expiration Date**

12 months from date of receipt.