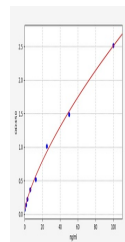


Product Datasheet

Human Anti-CRP ELISA Kit (orb563941)

Description	Human Anti-CRP ELISA Kit
Reactivity	Human
Range	1.56-100ng/ml
Target	Anti-CRP
Storage	2-8 °C for 6 months
Note	For research use only
Application notes	Sandwich ELISA, Double Antigen
Sensitivity	0.938ng/ml
Expiration Date	Please enquire.



Human
Anti-
CRP(Anti-C
Reactive
Protein A...