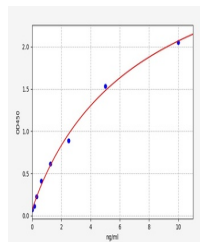


Product Datasheet

Human NOTCH3 ELISA Kit (orb563673)

Description	Human NOTCH3 ELISA Kit
Reactivity	Human
Range	0.156-10ng/ml
Target	NOTCH3
Storage	2-8 °C for 6 months
Note	For research use only
Uniprot ID	Q9UM47
Sensitivity	0.094ng/ml
Expiration Date	Please enquire.



Human
NOTCH3(Neurogenic
locus notch homo...