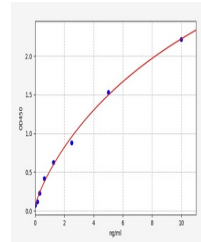


Product Datasheet

Human NOTCH2 ELISA Kit (orb563609)

Description	Human NOTCH2 ELISA Kit
Reactivity	Human
Range	0.156-10ng/ml
Target	NOTCH2
Storage	2-8 °C for 6 months
Note	For research use only
Uniprot ID	Q04721
Sensitivity	0.094ng/ml
Expiration Date	Please enquire.



Human
NOTCH2(Neurogenic
locus notch homo...