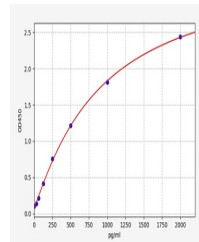


Product Datasheet

Human GLP2 ELISA Kit (orb563552)

Description	Human GLP2 ELISA Kit
Reactivity	Human
Range	31.25-2000pg/ml
Target	OXM
Storage	2-8 °C for 6 months
Note	For research use only
Application notes	Competitive ELISA, Coated with Antigen
Uniprot ID	P01275
Sensitivity	18.75pg/ml
Expiration Date	Please enquire.



Human
OXM(Oxyntomodulin)
ELISA Kit