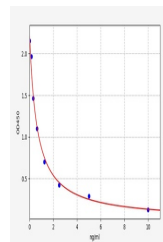


Product Datasheet

Human Opi ELISA Kit (orb563347)

Description	Human Opi ELISA Kit
Reactivity	Human
Range	0.156-10ng/ml
Target	Opi
Storage	2-8 °C for 6 months
Note	For research use only
Application notes	Competitive ELISA, Coated with Antibody
Sample Types	Serum,Plasma,Cell Culture Supernatant,Cell or tissue lysate,Other liquid samples
Uniprot ID	Q99935
Sensitivity	0.094ng/ml
Expiration Date	Please enquire.



Human
Opi(Opiorphin)
ELISA Kit