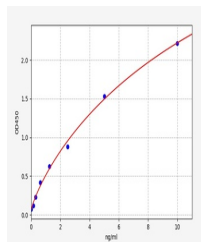


Product Datasheet

Human SLC25A6 ELISA Kit (orb562644)

Description	Human SLC25A6 ELISA Kit
Reactivity	Human
Range	0.156-10ng/ml
Target	SLC25A6
Storage	2-8 °C for 6 months
Note	For research use only
Uniprot ID	P12236
Sensitivity	0.094ng/ml
Expiration Date	Please enquire.



Human
SLC25A6(ADP/ATP
translocase 3)
ELI...