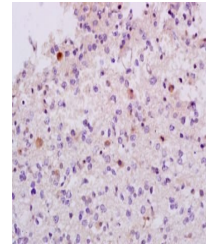


Product Datasheet

Wee1 (phospho-Ser642) antibody (orb5624)

Description	Wee1 (phospho-Ser642) antibody
Species/Host	Rabbit
Conjugation	Unconjugated
Tested Applications	ELISA
Immunogen	KLH conjugated synthesised phosphopeptide derived from human Wee1 around the phosphorylation site of Ser642 (SV(p-S)LT)
Target	Phospho-Wee1 (Ser642)
Preservatives	0.01M TBS(pH7.4) with 1% rAlbumin, 0.03% Proclin300 and 50% Glycerol.
Form/Appearance	Liquid
Concentration	1mg/ml
Storage	Shipped at 4°C. Store at -20 °C for one year. Avoid repeated freeze/thaw cycles.
Note	For research use only
Isotype	IgG
Clonality	Polyclonal
MW	72 kDa
Uniprot ID	P30291
Expiration Date	12 months from date of receipt.



Immunohistochemical analysis of formalin...