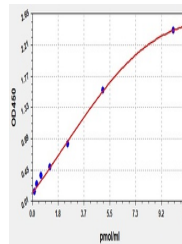


## Product Datasheet

### Human KLF14 ELISA Kit (orb562183)

<b>Description</b>	Human KLF14 ELISA Kit
<b>Reactivity</b>	Human
<b>Range</b>	0.156-10pmol/ml
<b>Target</b>	KLF14
<b>Storage</b>	2-8 °C for 6 months
<b>Note</b>	For research use only
<b>Uniprot ID</b>	<a href="#">Q8TD94</a>
<b>Sensitivity</b>	0.094nmol/L
<b>Expiration Date</b>	Please enquire.



Human  
KLF14(Krueppel-  
like factor 14)  
ELI...