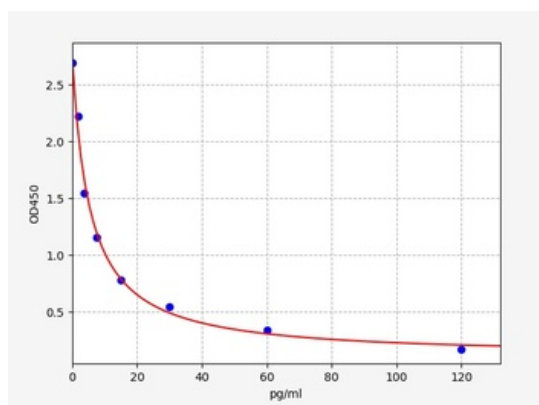


Product Datasheet

Human GHRL ELISA Kit (orb561916)

Description	Human GHRL ELISA Kit
Reactivity	Human
Range	1.875-120pg/ml
Target	GHRL
Storage	2 - 8 °C for 12 months
Note	For research use only
Application notes	Competitive ELISA, Coated with Antigen
Sample Types	Serum,Plasma,Cell Culture Supernatant,Cell or tissue lysate,Other liquid samples
Uniprot ID	Q9UBU3
Sensitivity	1.125pg/ml
Expiration Date	Please enquire.



Human GHRL(Ghrelin) ELISA Kit

Biorbyt Ltd.

7 Signet Court, Swann's Road,
Cambridge, CB5 8LA, United Kingdom
Email: info@biorbyt.com, support@biorbyt.com
Phone: [+44 \(0\) 1223 859-353](tel:+44(0)1223859353) | Fax: [+1 \(415\) 651-8558](tel:+1(415)6518558)

Biorbyt LLC.

68 TW Alexander Drive,
Durham, NC, 27713, United States
Email: info@biorbyt.com, support@biorbyt.com
Phone: [+1 \(415\) 906-5211](tel:+1(415)9065211) | Fax: [+1 \(415\) 651-8558](tel:+1(415)6518558)