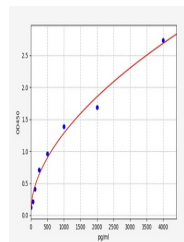


## Product Datasheet

### Human C-ERC ELISA Kit (orb561820)

<b>Description</b>	Human C-ERC ELISA Kit
<b>Reactivity</b>	Human
<b>Range</b>	62.5-4000pg/ml
<b>Target</b>	MSLN
<b>Storage</b>	2-8 °C for 6 months
<b>Note</b>	For research use only
<b>Uniprot ID</b>	<b>Q13421</b>
<b>Sensitivity</b>	37.5pg/ml
<b>Expiration Date</b>	Please enquire.



Human C-ERC(Mesothelin) ELISA Kit