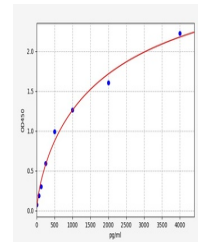


Product Datasheet

Human CCL22 ELISA Kit (orb561818)

Description	Human CCL22 ELISA Kit
Reactivity	Human
Range	62.5-4000pg/ml
Target	MDC
Storage	2-8 °C for 6 months
Note	For research use only
Uniprot ID	000626
Sensitivity	37.5pg/ml
Expiration Date	Please enquire.



Human
MDC(Macrophage
Derived
Chemokine) ...