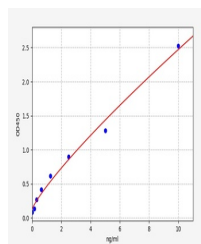


Product Datasheet

Human CXCL16 ELISA Kit (orb561707)

Description	Human CXCL16 ELISA Kit
Reactivity	Human
Range	0.156-10ng/ml
Target	CXCL16
Storage	2-8 °C for 6 months
Note	For research use only
Uniprot ID	Q9H2A7
Sensitivity	0.094ng/ml
Expiration Date	Please enquire.



Human
CXCL16(Chemokine
C-X-C-Motif Ligan...