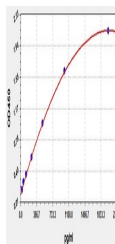


Product Datasheet

Human CRP ELISA Kit (orb561702)

Description	Human CRP ELISA Kit
Reactivity	Human
Range	31.2-2000pg/ml
Target	CRP
Storage	2-8 °C for 6 months
Note	For research use only
Uniprot ID	P02741
Sensitivity	2pg/ml
Expiration Date	Please enquire.



Human
CRP(C-
Reactive
Protein)
ELISA Kit