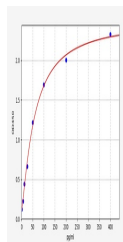


Product Datasheet

Human CCL8 ELISA Kit (orb561673)

Description	Human CCL8 ELISA Kit
Reactivity	Human
Range	6.25-400pg/ml
Target	CCL8
Storage	2-8 °C for 6 months
Note	For research use only
Uniprot ID	P80075
Sensitivity	3.75pg/ml
Expiration Date	Please enquire.



Human
CCL8(C-C
motif
chemokine
8) ELISA ...