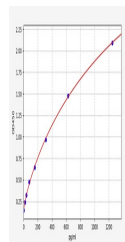


## Product Datasheet

### Human CCL15 ELISA Kit (orb561662)

<b>Description</b>	Human CCL15 ELISA Kit
<b>Reactivity</b>	Human
<b>Range</b>	19.5-1250pg/ml
<b>Target</b>	CCL15
<b>Storage</b>	2-8 °C for 6 months
<b>Note</b>	For research use only
<b>Uniprot ID</b>	<b>Q16663</b>
<b>Sensitivity</b>	11.719pg/ml
<b>Expiration Date</b>	Please enquire.



Human  
CCL15(C-C  
motif  
chemokine  
15) ELIS...