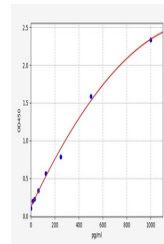


Product Datasheet

Human CXCL7 ELISA Kit (orb561615)

Description	Human CXCL7 ELISA Kit
Reactivity	Human
Range	15.6-1000pg/ml
Target	CXCL7
Storage	2-8 °C for 6 months
Note	For research use only
Uniprot ID	P02775
Sensitivity	9.375pg/ml
Expiration Date	Please enquire.



Human
CXCL7(Platelet
basic protein)
ELIS...