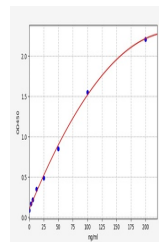


## Product Datasheet

### Human CLU ELISA Kit (orb561612)

<b>Description</b>	Human CLU ELISA Kit
<b>Reactivity</b>	Human
<b>Range</b>	3.125-200ng/ml
<b>Target</b>	CLU
<b>Storage</b>	2-8 °C for 6 months
<b>Note</b>	For research use only
<b>Sample Types</b>	Serum,Plasma,Cell Culture Supernatant,Cell or tissue lysate,Other liquid samples
<b>Uniprot ID</b>	<b>P10909</b>
<b>Sensitivity</b>	1.875ng/ml
<b>Expiration Date</b>	Please enquire.



Human  
CLU(Clusterin)  
ELISA Kit