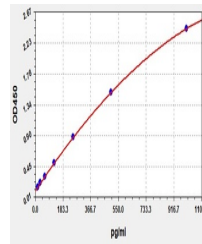


Product Datasheet

Canine TM ELISA Kit (orb561434)

Description	Canine TM ELISA Kit
Reactivity	Canine
Range	15.625-1000pg/ml
Target	TM
Storage	2-8 °C for 6 months
Note	For research use only
Uniprot ID	Q5W7P8
Sensitivity	9.375pg/ml
Expiration Date	Please enquire.



Canine
TM(Thrombomodulin)
ELISA Kit