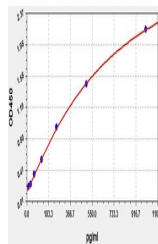


## Product Datasheet

### Canine IL-1beta ELISA Kit (orb561423)

<b>Description</b>	Canine IL-1beta ELISA Kit
<b>Reactivity</b>	Canine
<b>Range</b>	15.625-1000pg/ml
<b>Target</b>	IL-1 $\beta$
<b>Storage</b>	2-8 °C for 6 months
<b>Note</b>	For research use only
<b>Uniprot ID</b>	<a href="#">Q28292</a>
<b>Sensitivity</b>	9.375pg/ml
<b>Expiration Date</b>	Please enquire.



Canine IL-1 $\beta$ (Interleukin 1 Beta) ELISA

...