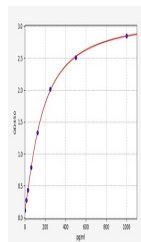


Product Datasheet

Canine MCP-1 ELISA Kit (orb561404)

Description	Canine MCP-1 ELISA Kit
Reactivity	Canine
Range	15.625-1000pg/ml
Target	MCP-1
Storage	2-8 °C for 6 months
Note	For research use only
Uniprot ID	P52203
Sensitivity	9.375pg/ml
Expiration Date	Please enquire.



Canine
MCP-
1(Monocyte
Chemotactic
Protei...