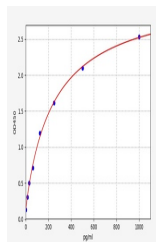


Product Datasheet

Canine IL-10 ELISA Kit (orb561400)

Description	Canine IL-10 ELISA Kit
Reactivity	Canine
Range	15.625-1000pg/ml
Target	IL-10
Storage	2-8 °C for 6 months
Note	For research use only
Uniprot ID	P48411
Sensitivity	9.375pg/ml
Expiration Date	Please enquire.



Canine IL-10(Interleukin 10) ELISA Kit